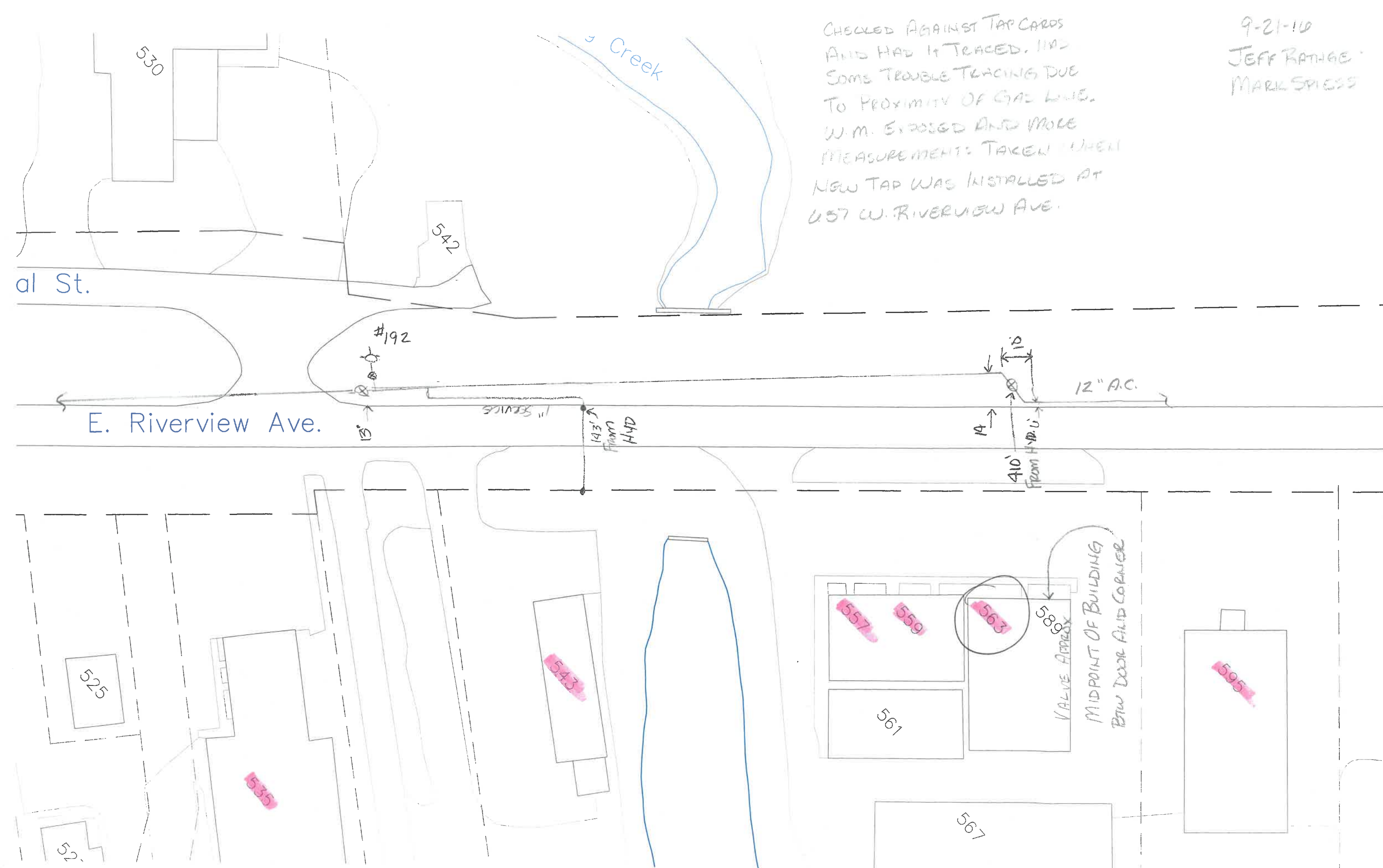


9-21-10
JEFF BATHGE
MARK SPIESS

CHECKED AGAINST TAP CARDS
AND HAD IT TRACED. HAD
SOME TROUBLE TRACING DUE
TO PROXIMITY OF GAS LINE.
W.M. EXPOSED AND MOLE
MEASUREMENTS TAKEN WHEN
NEW TAP WAS INSTALLED AT
457 W. RIVERVIEW AVE.



E. Riverview Ave.

12" A.C.

525

535

543

557

559

563

589

561

567

595

VALVE APPROX
MIDPOINT OF BUILDING
BTW DOOR AND CORNER